

# MarCator 837

## Depth gage for Dial Indicators

### FEATURES

- Large measuring bridge hardened and chrome plated surface
- Plan grinded Measuring surface
- Holder for dial indicators with Ø 8 mm shank
- **Package contains:** depth measuring bridge, contact point 902 (l = 12 mm), excludes indicator



### TECHNICAL DATA

Order no.	4494010	4494011	4494012
Product type		837	

### ACCESSORIES

Order no.	Product name	Product type
4311060	Dial indicator, 0.01 mm, 10 mm	810 AT
4336010	Digital indicator, 0.01 mm, 12.5 mm	1075 R
4337131	Digital indicator, 0.01 mm, 25 mm	1086 R
4360015	Spherical contact point, steel, l = 25 mm, r = 6 mm	902
4360017	Spherical contact point, steel, l = 35 mm, r = 6 mm	902
4360026	Spherical contact point, steel, l = 45 mm, r = 6 mm	902
4360031	Spherical contact point, steel, l = 55 mm, r = 6 mm	902
4360035	Spherical contact point, steel, l = 65 mm, r = 6 mm	902
4360020	Spherical contact point, steel, l = 75 mm, r = 6 mm	902
4360036	Spherical contact point, steel, l = 85 mm, r = 6 mm	902
4360029	Spherical contact point, steel, l = 95 mm, r = 6 mm	902



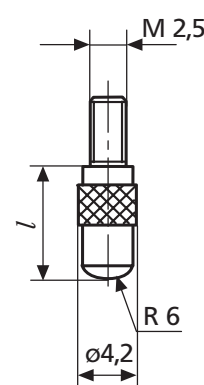
810 AT



1075 R

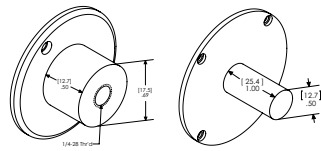


1086 R; 1086 ZR

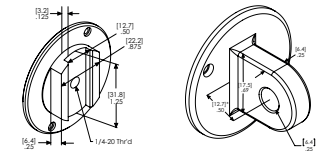


902; 902 H

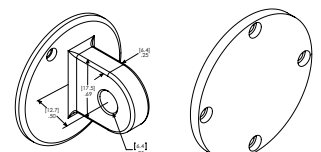
ACCESSORIES



BK-692;  
BK-177      BK-664



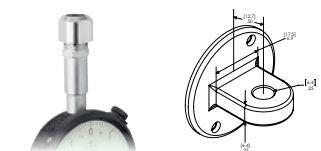
BK-531; BK-10      BK-383;  
BK-431



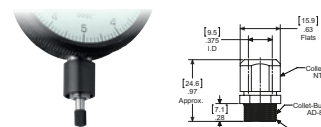
BK-2168;  
BK-545      BK-470;  
BK-473



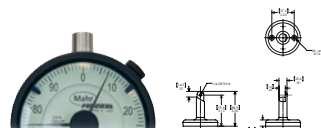
HD-57; HD-53      LR-48; LR-50



AD-138      BK-400;  
BK-109



BU-80      AD-87



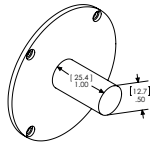
BK-400;  
BK-109      BA-1051



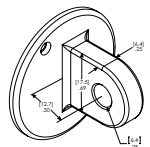
HG-100

Order no.	Product name	Type	ANSI/ AGD Group
2011341	Magnetic maximum hand (option)	2011341	3
2014804	Magnetic maximum hand w/snap on bezel (option)	2014804	2
2201801	Adaptor for inductive probes for use on dial indicators (AGD)	AD-138	
2201846	Threaded bushing .625" long .500" OD with 5/16-32 internal thread	AD-62	
2201854	Split collet OD is 17.45 mm/ .687"; requires 1/2-32 threaded hole	AD-87	
2203133	Mounting bracket with adjusting knob for AGD 2	AT-116	2
2203156	Mounting bracket with hex socket adjustable	AT-28	2
2203163	Brake attachment, dust cap mount (option), range limited to 2235806 Tap 1/2 - 32/ .250" for group 1 and to 12 mm/ .500" for group 2-4 indicators	AT-81	
2203184	Brake attachment (option)	AT-A-7-W2	2
2203185	Brake attachment (option)	AT-A-7-W3	3
2204603	Base for indicators with lug back	BA-1051	
2204730	Adjustable back with 1/4-20 thread	BK-10	3
2204734	Horizontal lug back, centered	BK-109	3
2204763	Screw type back 1/4-28	BK-177	3
2204772	Post back 1/2" dia.	BK-2093	2
2204773	Vertical lug, offset 1/4" hole	BK-2168	2
2204780	Vertical lug back, centered 1/4" hole	BK-383	2
2204782	Horizontal lug back, centered, 1/4" hole	BK-400	2
2204784	Vertical lug back, centered	BK-431	3
2204786	Flat back for AGD 2	BK-470	2
2204787	Flat back	BK-473	3
2204790	Adjustable back 1/4-20 thread	BK-531	2
2204791	Vertical lug back, offset	BK-545	3
2204799	Post back 1/2" dia.	BK-664	3
2204802	Screw type back 1/4-28	BK-692	2
2204812	Rack back used on AT-116 and AT-28	BK-93	2
2205081	Split bushing, for use with protective housing .375" stem hole X .687" OD	BU-111	
2205127	Split bushing with shoulder 8 mm stem hole X .375" OD	BU-197	
2205195	Split bushing, with counterbore, .375" stem hole x .500" OD	BU-80	
2205200	Split bushing without counterbore, .375" stem hole x .50" OD	BU-94	
2205222	Tolerance hands w/snap on bezel (option)	BZ-2503	2
2206230	Rane limiting caps, adjustable up to 9.52 mm / .375"	CS-123	
2219994	Rubber bellows for shank Ø .375"	GU-2	
2220154	Tolerance hands w/screw on bezel (option)	HD-57	2
2220177	Protective housing for AGD 2 models with rangers up to 6.35 mm/ .250"	HG-100	2
2220178	Protective housing for AGD 2 models with rangers up to 25 mm/ 1"	HG-101	2
2220539	OX-bow lifting lever	LR-40	
2220544	Lifting lever to lift probe manually (left)	LR-48	2
2220545	Lifting lever to lift probe manually (right)	LR-49	2
2220546	Lifting lever to lift probe manually (left)	LR-50	3
2220547	Lifting lever to lift probe manually (right)	LR-51	3
2235806	Tap 1/2 -32	V-892	

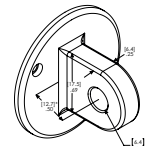
ACCESSORIES



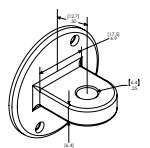
BK-2093;  
BK-664



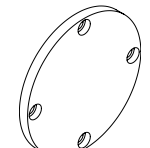
BK-2168;  
BK-545



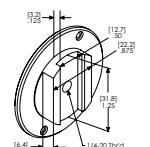
BK-383;  
BK-431



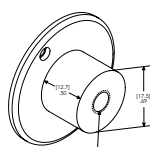
BK-400;  
BK-109



BK-470;  
BK-473



BK-531; BK-10



BK-692;  
BK-177



HD-57;HD-53



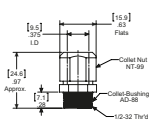
HG-100



LR-48; LR-50



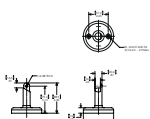
AD-138



AD-87



BU-80



BA-1051

Order no.	Product name	Product type	ANSI/ AGD Group
2011341	Magnetic maximum hand (option)		3
2014804	Magnetic maximum hand w/snap on bezel (option)		2
2201801	Adaptor for inductive probes for use on dial indicators (AGD)	AD-138	
2201846	Threaded bushing .625" long .500" OD with 5/16-32 internal thread	AD-62	
2201854	Split collet OD is 17.45 mm/ .687"; requires 1/2-32 threaded hole	AD-87	
2203133	Mounting bracket with adjusting knob for AGD 2	AT-116	2
2203156	Mounting bracket with hex socket adjustable	AT-28	2
2203163	Brake attachment, dust cap mount (option), range limited to 6.35 mm/ .250" for group 1 and to 12 mm/ .500" for group 2-4 indicators	AT-81	
2203184	Brake attachment (option)	AT-A-7-W2	2
2203185	Brake attachment (option)	AT-A-7-W3	3
2204603	Base for indicators with lug back	BA-1051	
2204730	Adjustable back with 1/4-20 thread	BK-10	3
2204734	Horizontal lug back, centered	BK-109	3
2204763	Screw type back 1/4-28	BK-177	3
2204772	Post back 1/2" dia.	BK-2093	2
2204773	Vertical lug, offset 1/4" hole	BK-2168	2
2204780	Vertical lug back, centered 1/4" hole	BK-383	2
2204782	Horizontal lug back, centered, 1/4" hole	BK-400	2
2204784	Vertical lug back, centered	BK-431	3
2204786	Flat back for AGD 2	BK-470	2
2204787	Flat back	BK-473	3
2204790	Adjustable back 1/4-20 thread	BK-531	2
2204791	Vertical lug back, offset	BK-545	3
2204799	Post back 1/2" dia.	BK-664	3
2204802	Screw type back 1/4-28	BK-692	2
2204812	Rack back used on AT-116 and AT-28	BK-93	2
2205081	Split bushing, for use with protective housing .375" stem hole X .687" OD	BU-111	
2205127	Split bushing with shoulder 8 mm stem hole X .375" OD	BU-197	
2205195	Split bushing, with counterbore, .375" stem hole x .500" OD	BU-80	
2205200	Split bushing without counterbore, .375" stem hole x .50" OD	BU-94	
2205222	Tolerance hands w/snap on bezel (option)	BZ-2503	2
2206230	Rane limiting caps, adjustable up to 9.52 mm / .375"	CS-123	
2219994	Rubber bellows for shank Ø .375"	GU-2	
2220154	Tolerance hands w/screw on bezel (option)	HD-57	2
2220177	Protective housing for AGD 2 models with rangers up to 6.35 mm/ .250"	HG-100	2
2220178	Protective housing for AGD 2 models with rangers up to 25 mm/ 1"	HG-101	2
2220539	OX-bow lifting lever	LR-40	
2220544	Lifting lever to lift probe manually (left)	LR-48	2
2220545	Lifting lever to lift probe manually (right)	LR-49	2
2220546	Lifting lever to lift probe manually (left)	LR-50	3
2220547	Lifting lever to lift probe manually (right)	LR-51	3
2235806	Tap 1/2 -32	V-892	